

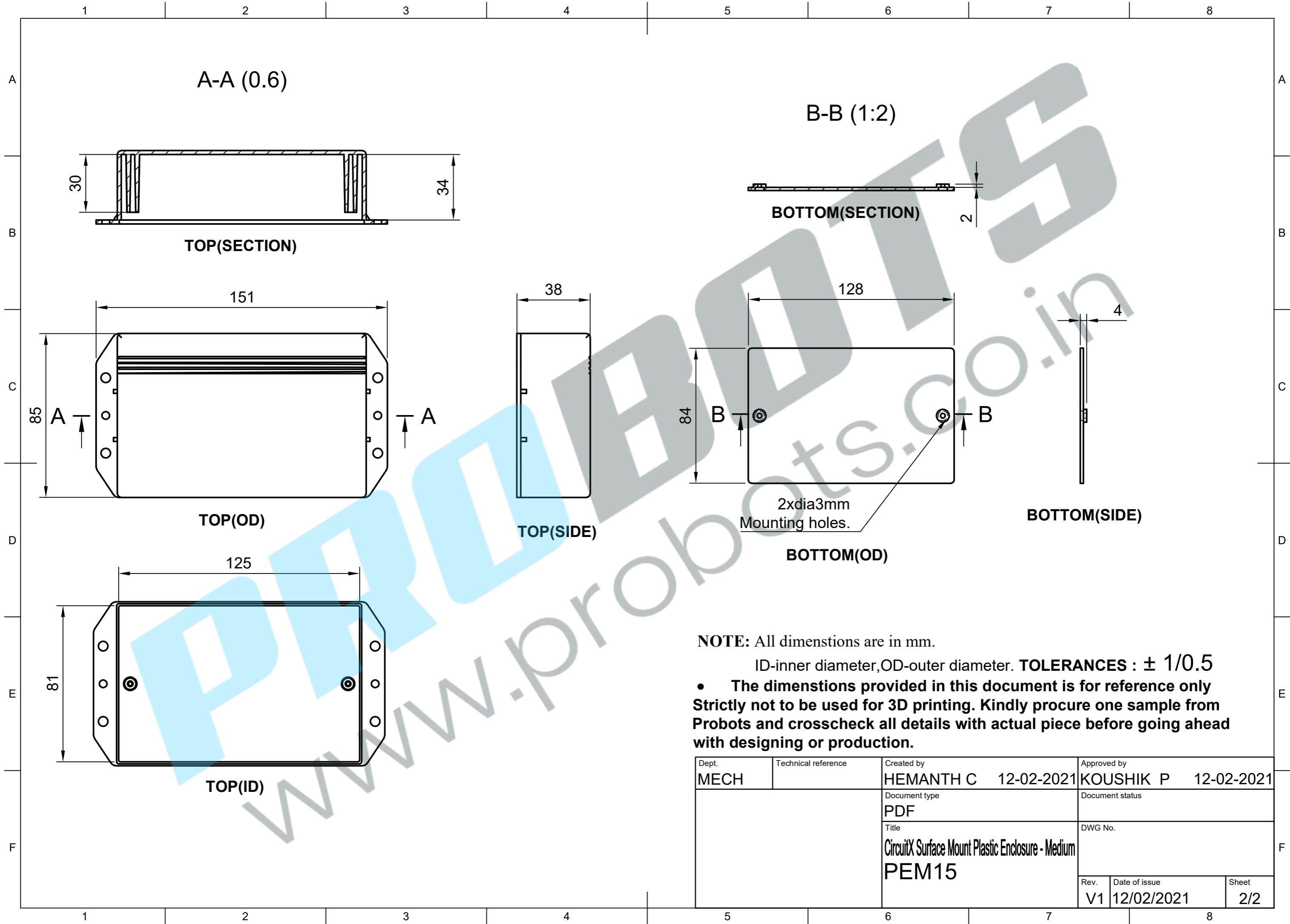
iso

NOTE: All dimensions are in mm.

1)TOP 2)BOTTOM. TOLERANCES : $\pm 1/0.5$

- The dimensions provided in this document is for reference only. Strictly not to be used for 3D printing. Kindly procure one sample from Probots and crosscheck all details with actual piece before going ahead with designing or production.

| | | | |
|---------------|---------------------|---|-------------------------------------|
| Dept. MECH | Technical reference | Created by HEMANTH C 12-02-2021 | Approved by KOUSHIK P 12-02-2021 |
| | | Document type PDF | Document status |
| | | Title CircuitX Surface Mount Plastic Enclosure - Medium PEM15 | DWG No. |
| | | Rev. V1 | Date of issue 12/02/2021 |
| | | | Sheet 1/1 |



NOTE: All dimensions are in mm.
 ID-inner diameter, OD-outer diameter. **TOLERANCES : ± 1/0.5**
 • The dimensions provided in this document is for reference only
Strictly not to be used for 3D printing. Kindly procure one sample from Probots and crosscheck all details with actual piece before going ahead with designing or production.

| | | | |
|---------------|---------------------|---|-------------------------------------|
| Dept. MECH | Technical reference | Created by HEMANTH C 12-02-2021 | Approved by KOUSHIK P 12-02-2021 |
| | | Document type PDF | Document status |
| | | Title CircuitX Surface Mount Plastic Enclosure - Medium PEM15 | DWG No. |
| | | Rev. V1 | Date of issue 12/02/2021 |
| | | Sheet 2/2 | |