

***PLASTIC
ENCLOSURES
CATALOGUE***

Probots Techno Solutions
www.probots.co.in

Probots Plastic Enclosures

1,000+ High Quality Boxes for your Electronics

PROBOTS
www.probots.co.in

Probots offers a wide range of 1,000+ professional Industrial Grade Plastic Enclosures for Consumer, Industrial, Medical, and Generic Electronic Products. These enclosures are specifically manufactured to offer best-in-class durability, finish and functionality. Designed and manufactured to work in harsh conditions and environments.

Users no longer depend on poorly finished 3D Printed / CNC Machined Boxes. Use one of our boxes for your next product to give a professional look and feel during usage. No need to invest in a mold/die or wait for production. We have a wide range of enclosures ready to dispatch.

Plastic enclosures are designed to house and protect sensitive electronic and electrical components in various applications. Our high-quality and durable plastic housings are molded with high-quality materials for indoor or outdoor applications that require non-metallic enclosures. They are available in an array of sizes, shapes and colors, our selection ensures you can find the right solution for any application. From small plastic boxes for potting applications to heavy-duty plastic boxes for industrial use, we have a non-metallic enclosure solution to fit your every need.

Applications and uses for plastic enclosures are endless. Some popular non-metallic enclosure applications include Desktop and Handheld Devices, Remote Sensors, Industrial Control Boxes, Wireless And Telecommunication Devices, Wall Mount Enclosures and Pole Mount Enclosures, Desktop Enclosures, Handheld Enclosures, Meters, Sensor Nodes, Routers, Remotes, and More.

Customers have been using our enclosures for 10+ years for multiple products - IoT Sensor Nodes, Smart Devices, Room Monitoring Devices, Industrial Electronics, Kiosks, Panel Meters, Adapters and Chargers, Power Monitors, Location Trackers, etc.

Our enclosures are manufactured to be easily modified, cut, and drilled into with simple tools. It is light and yet quite strong and rugged. They are manufactured to be used in universal applications and for easy customisation to suit individual needs.



FEATURES

- Wide range of ready-to-ship enclosures with no MOQ
- Greatly reduces investment time, effort and costs. Offer faster time to market for customers
- Injection Moulded enclosures offer better quality, finish and reliability compared to 3D Printed, CNC Machined, Acrylic, Vacuum Casted Enclosures
- Our enclosures offer the best value to customers looking to manufacture products in range of 1-1000pcs compared to all other enclosure manufacturing technologies
- 1,000+ models ensures wide range of choices in most popular sizes, designs and colors
- Models are available with Waterproof/Dustproof ratings - IP67, IP65, and IP54 protection classes. They are equivalent to NEMA6, NEMA5 and NEMA4 standards
- Numerous lid / top cover mounting styles - screw fastening, snap fitting, hinge type, etc
- Multiple colors and finishes - White, Cream, Black, Transparent with Matt and Gloss Finish, etc
- Intuitive designs, simple to assemble electronics, easy to use by end-users
- Select models have PCB Mounting Bosses on the inside for easy circuit board mounting
- IP65 rated enclosures include a robust and rugged design with gasket. Designed specifically for various industrial environments.
- Range of Small-sized Enclosures for small circuits and housings
- Surface Mount Models are available with flanges with screw or nail mounting
- Enclosures models designed for desktop applications, are designed for specialized loggers, meters, etc

APPLICATIONS

- Enclosures for Wi-Fi access points, Suitable for installing network devices, circuit breakers, IOT sensors and control units. Widely used for solar power junction boxes, outdoor Wi-Fi access points, and outdoor measuring equipment
- Enclosures for Customized Electronic Boards and Circuits
- Generic Handheld applications
- Modern Cases designed specifically for IoT Sensors and Gateway applications
- Traditional Generic Enclosures for control boxes, junction boxes, and power switchboard boxes
- Suitable for enclosing measuring devices, broadcasting devices, medical equipment, music instruments, electric tools, and cameras
- IP65 rated enclosures for industrial wiring, relay for motors or sensors

CUSTOMIZATION SERVICES

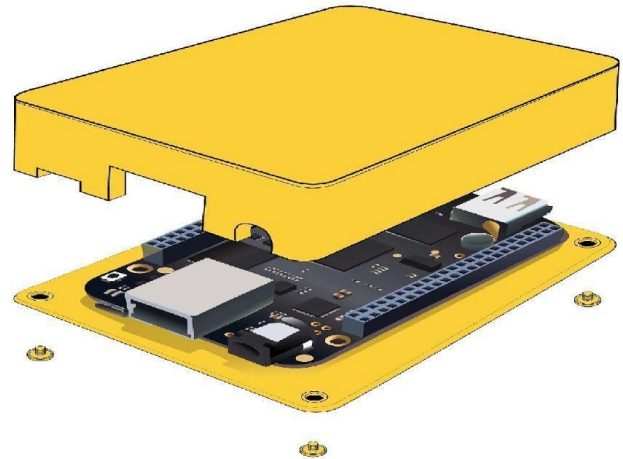
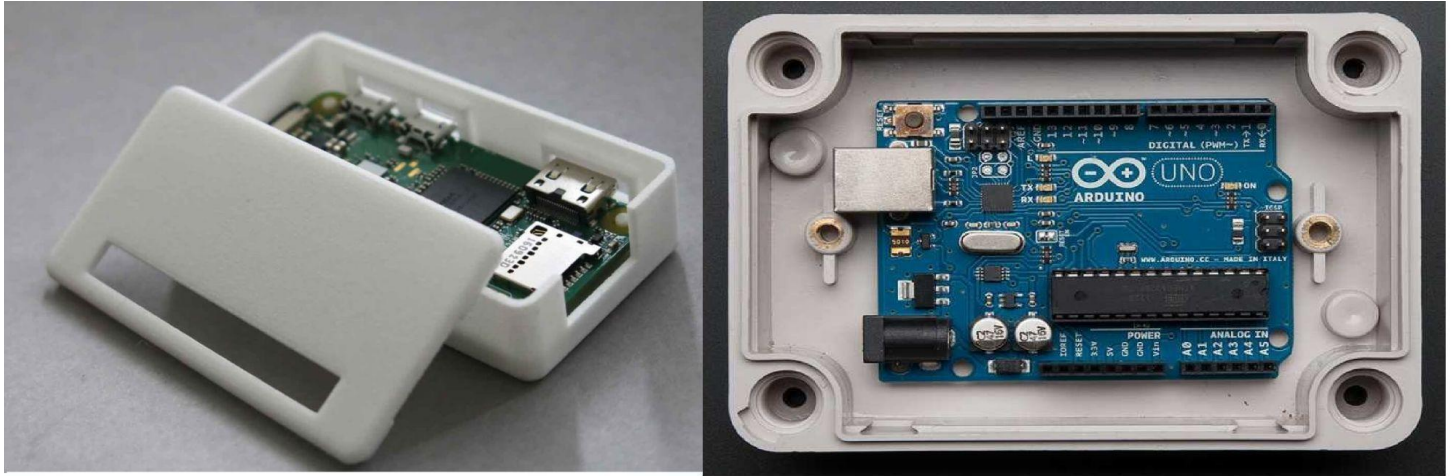
- We offer multiple services to help you customise our generic enclosures to your particular application.

- We provide one-stop customization services, such as Cutouts for Cables, Connectors and Displays, Screen Printing Logos & Labels, Overlay Manufacturing, and Painting.
- For holes/cut-outs, we can recommend the most suitable and cost-effective method among CNC Machining, Laser Cutting, or Punching according to your volume requirements.
- We also propose the most suitable and cost-effective Printing/Marking solution from Inkjet printing, Laser marking, Silkscreen printing or Engraving.

TABLE OF CONTENTS

Features	2
Customization Services	2
Table of Contents	3
Plastic Enclosure - Small	4
Plastic Enclosure - Medium	10
General Purpose Enclosure	19
Water Proof Enclosure	23

PLASTIC ENCLOSURE - SMALL





CircuitX PES01

OD: 5.7 x 3.8 x 2.1 cm

Snapfit Enclosure with openings on sides for cables and connectors

Applications: Suitable to house DC Chargers, LED Drivers, and General Purpose Boards.



CircuitX PES02

OD: 4.1 x 2.8 x 2.6 cm

Snapfit Enclosure with openings on sides for cables and connectors

Applications: Used to house DC Chargers, LED Drivers, and General Purpose Boards.



CircuitX PES03

OD: 5.7 x 2.4 x 2.4 cm

Snapfit Enclosure with hole for surface mounting.

Applications: Used to house DC Chargers, LED Drivers, and General Purpose Boards.



CircuitX PES04

OD: 5.5 x 2 x 3 cm

Snapfit Enclosure with openings on sides for air ventilation.

Applications: Used to house DC Chargers, LED Drivers, and General Purpose Boards.



CircuitX PES05

OD: 7.9 x 3.2 x 2.8 cm

Snapfit Enclosure with slots for surface mounting

Applications: Used to house DC Chargers, LED Drivers, and General Purpose Boards.



CircuitX PES06

OD: 5.8 x 9.2 x 2.5 cm

Screw Locked Enclosure in neat handheld/desktop design.

Applications: Used to house DC Chargers, LED Drivers, and General Purpose Boards.



CircuitX PES07
OD: 5.5 x 2.9 x 2.5 cm

Snapfit Enclosure with openings on sides for cables and connectors

Applications: Used to house DC Chargers, LED Drivers, General Purpose Boards.



CircuitX PES08
OD: 6.5 x 3 x 2.3 cm

Snapfit Enclosure with openings on sides for cables and connectors

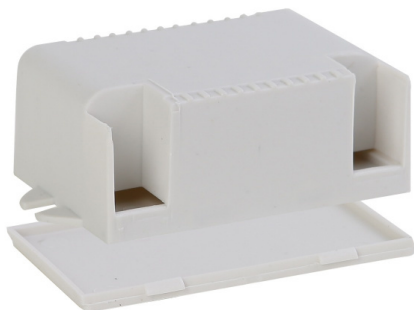
Applications: Used to house DC Chargers, LED Drivers, General Purpose Boards.



CircuitX PES09
OD: 2.2 x 2.2 x 2.2 cm

Snapfit Enclosure with openings on sides for cables and connectors

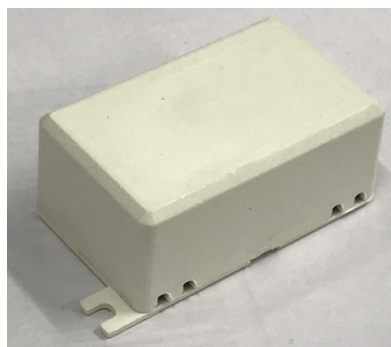
Applications: Used to house DC Chargers, LED Drivers, General Purpose Boards.



CircuitX PES10
OD: 6.3 x 4.3 x 2.5 cm

Snapfit Enclosure with cutouts for 2 x standard screw terminal connectors. Surface mounting holes

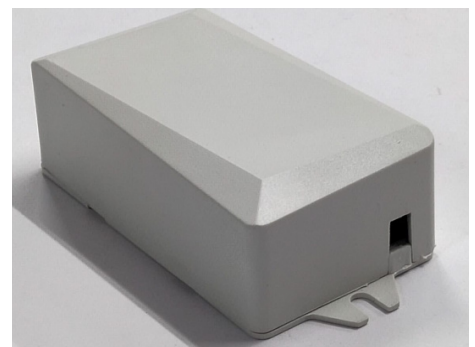
Applications: Used to house DC Chargers, LED Drivers, General Purpose Boards.



CircuitX PES11
OD: 4.7 x 2.9 x 2.2 cm

Snapfit Enclosure with surface mounting design

Applications: Used to house DC Chargers, LED Drivers, General Purpose Boards.



CircuitX PES12
OD: 7.8 x 4.3 x 2.5 cm

Snapfit Enclosure with openings on sides for cables and connectors. Surface Mounting options on bottom lid

Applications: Used to house DC Chargers, LED Drivers, General Purpose Boards.



CircuitX PES13

OD: 5.2 x 2.9 x 2.3 cm

Snapfit Enclosure with openings on sides for cables and connectors. Surface Mounting options on bottom lid

Applications: Used to house DC Chargers, LED Drivers, General Purpose Boards.

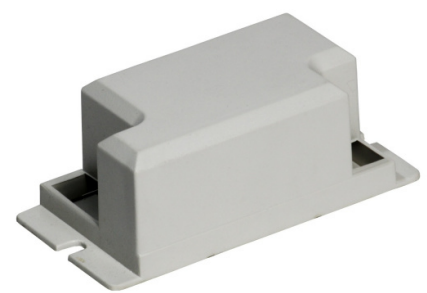


CircuitX PES14

OD: 10 x 4.8 x 4.3 cm

Snapfit Enclosure with Surface Mounting options on bottom lid

Applications: Used to house DC Chargers, LED Drivers, General Purpose Boards.



CircuitX PES15

OD: 9.0 x 4.2 x 3.2 cm

Snapfit Enclosure with cutouts for 2 x standard screw terminal connectors. Surface mounting holes

Applications: Used to house DC Chargers, LED Drivers, General Purpose Boards.



CircuitX PES16

OD: 10 x 4.5 x 2.5 cm

Made from high quality plastic. Perfect for housing Small sized PCBs & boards. With Surface Mounting

Applications: Used to house DC Chargers, LED Drivers, General Purpose Boards.



CircuitX PES18

OD: 5.7 x 2.9 x 1.8 cm

Made from high quality plastic. Perfect for housing Small sized PCBs & boards. 2 x Slots for screw terminal connectors.

Applications: Used to house DC Chargers, LED Drivers, General Purpose Boards.



CircuitX PES19

OD: 6.5 x 3.7 x 1.8 cm

Made from high quality plastic. Perfect for housing Small sized PCBs & boards. 2 x Slots for screw terminal connectors.

Applications: Used to house DC Chargers, LED Drivers, General Purpose Boards.



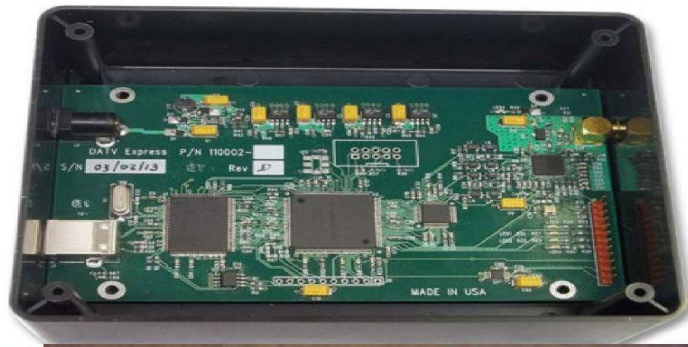
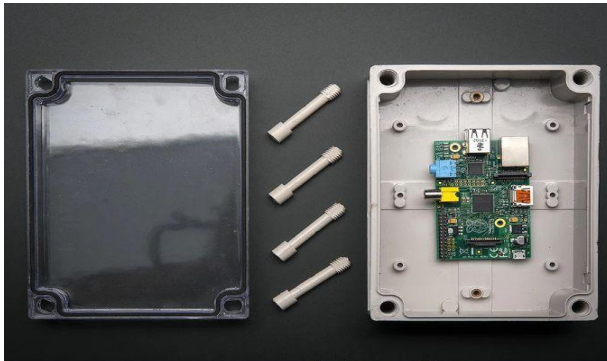
CircuitX PES20

OD: 8.5 x 4.2 x 2.2 cm

Made from high-quality plastic. Perfect for housing Small sized PCBs & boards. 2 x Slots for screw terminal connectors.

Applications: Used to house DC Chargers, LED Drivers, General Purpose Boards.

PLASTIC ENCLOSURE - MEDIUM





CircuitX PEM01

OD: 7.2 x 4.5 x 3.2 cm

Top and bottom lid are secured with screws. Inlet and Outlet slot for cables. Suitable for Desktop Applications - Programmers, Converters, Loggers, Sensors, etc

Applications: Used to house DC Chargers, LED Drivers, General Purpose Boards.



CircuitX PEM02

OD: 7.2 x 4.5 x 3.2 cm

Surface Mount Enclosure with Flanges for Mounting. Screw Locking between top and bottom lid.

Applications: Used to house DC Chargers, LED Drivers, General Purpose Boards.



CircuitX PEM03

OD: 10.3 x 7.5 x 3.0 cm

Surface Mount Enclosure with Flanges for Mounting. Screw Locking between top and bottom lid.

Applications: Used to house DC Chargers, LED Drivers, General Purpose Boards.



CircuitX PEM04

OD: 6.5 x 6.5 x 4.2 cm

Surface Mount Enclosure with Flanges for Mounting. Screw Locking between top and bottom lid. Cutouts for Screw Terminal Connectors.

Applications: Used to house DC Chargers, LED Drivers, General Purpose Boards.



CircuitX PEM05

OD: 9.8 x 3.7 x 3.2 cm

Top and bottom lid are secured with screws. Inlet and Outlet slot for cables. Suitable for Desktop Applications - Programmers, Converters, Loggers, Sensors, PSU, SMPS, etc. Cable cutouts on opposite sides for easy wiring



CircuitX PEM06

OD: 12 x 5.9 x 3.1 cm

Suitable for Desktop Applications - Programmers, Converters, Loggers, Sensors, PSU, SMPS, etc. Cable cutouts on opposite sides for easy wiring

Applications: Used to house DC Chargers, LED Drivers, General Purpose Boards.

Applications: Used to house DC Chargers, LED Drivers, General Purpose Boards.



CircuitX PEM07

OD:10.8 x 6 x 3.4 cm

With Screw Lock & Cable Slots. Suitable for Desktop Applications - Programmers, Converters, Loggers, Sensors, PSU, SMPS, etc. Cable cutouts on opposite sides for easy wiring. LED cutout at the top

Applications: Used to house DC Chargers, LED Drivers, General Purpose Boards.



CircuitX PEM09

OD: 13.2 x 6.7 cmx3.7 cm

With Screw Lock & Cable Slots. Suitable for Desktop Applications - Programmers, Converters, Loggers, Sensors, PSU, SMPS, etc. Cable cutouts on opposite sides for easy wiring

Applications: Used to house DC Chargers, LED Drivers, General Purpose Boards.



CircuitX PEM10

OD:12.1 x 6.1 x 3.5 cm

With Screw Lock & Cable Slots. Suitable for Desktop Applications - Programmers, Converters, Loggers, Sensors, PSU, SMPS, etc. Cable cutouts on opposite sides for easy wiring

Applications: Used to house DC Chargers, LED Drivers, General Purpose Boards.



CircuitX PEM11

OD: 9.5 x 4.5 x 2.8 cm

Suitable for Desktop

Applications - Programmers, Converters, Loggers, Sensors, PSU, SMPS, etc. Cable cutouts on opposite sides for easy wiring

Applications: Used to house DC Chargers, LED Drivers, General Purpose Boards.



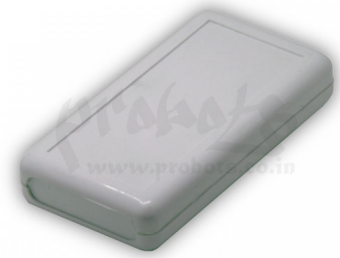
CircuitX PEM12

OD: 17.6 x 10 x 2.6 cm

Suitable for Desktop & Handheld Applications -

Programmers, Converters, Loggers, Sensors, PSU, SMPS, etc. Cable cutouts on opposite sides for easy wiring

Applications: Used to house DC Chargers, LED Drivers, General Purpose Boards.

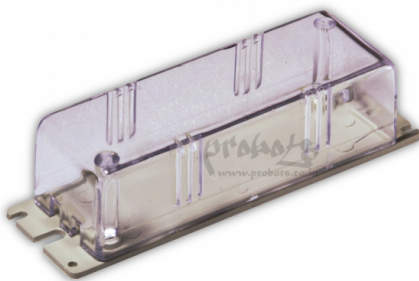


CircuitX PEM13

OD: 13.5 x 7.1 x 2.5 cm

Remote Enclosure with Battery Compartment for 2xAA Battery. Front Piece can be removed for adding custom PCB

Applications: Used to house DC Chargers, LED Drivers, General Purpose Boards.



CircuitX PEM14

OD: 13.7 x 4.1 x 3.5 cm

Surface Mount Enclosure with Transparent Top for light indication.

Applications: Used to house DC Chargers, LED Drivers, General Purpose Boards.



CircuitX PEM15

OD: 15 x 8.5 x 4 cm

Surface Mount Enclosure with Flanges for Surface/Pole Mounting. Screw Locking between top and bottom lid. Lid and Box are Secured by screws.

Applications: Used to house DC Chargers, LED Drivers, General Purpose Boards.



CircuitX PEM16

OD: 17.7 x 8.6 x 3.6 cm

Surface Mount Enclosure with Flanges for Surface/Pole Mounting. Screw Locking between top and bottom lid. Lid and Box are Secured by screws.

Applications: Used to house DC Chargers, LED Drivers, General Purpose Boards.

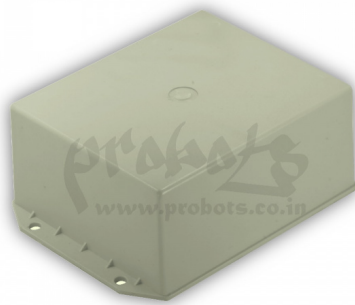


CircuitX PEM17

OD: 19.9 x 10 x 3.4 cm

Surface Mount Enclosure with Flanges for Surface/Pole Mounting. Screw Locking between top and bottom lid. The Lid and Box are Secured by screws.

Applications: Used to house DC Chargers, LED Drivers, General Purpose Boards.

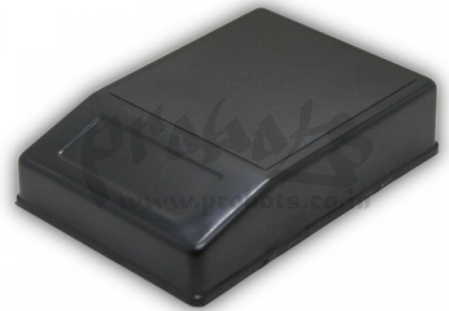


CircuitX PEM18

OD: 14.5 x 10.9 x 5.7 cm

Surface Mount Enclosure with Flanges for Surface/Pole Mounting. Screw Locking between top and bottom lid. The lid and Box are Secured by screws.

Applications: Used to house DC Chargers, LED Drivers, General Purpose Boards.



CircuitX PEM20

OD: 11.1 x 7.7 x 2.7 cm

Suitable for Desktop & Handheld Applications - Programmers, Converters, Loggers, Sensors, PSU, SMPS, etc. The lid secured by screw locks.

Applications: Used to house DC Chargers, LED Drivers, General Purpose Boards.



CircuitX PEM40

OD: 16.2 x 11.2 x 7 cm

Suitable for Desktop & Handheld Applications - Programmers, Converters, Loggers, Sensors, PSU, SMPS, etc. The lid is secured by screw locks.

Applications: Used to house DC Chargers, LED Drivers, General Purpose Boards.



CircuitX PEM41

OD: 17.7 x 16 x 6.2cm

Made from high quality plastic (ABS). Perfect for housing Small sized PCBs & boards. The lid is secured by screw locks.

Applications: Used to house DC Chargers, LED Drivers, General Purpose Boards.



CircuitX PEM100

OD: 8.5 x 7.4 x 2.2 cm

IP65 Waterproof & Dust Proof Enclosure with Gasket. Flanges for Surface & Pole Mounting.

Applications: Designed for Outdoor and Automobile Applications. Used to house GPS Trackers, Fuel Monitors, IOT Sensors Nodes, DC Chargers, LED Drivers, General Purpose Boards.



CircuitX PEM101
OD: XX x XX x XX cm

Surface mount enclosure with cutout and openings for screw terminal connectors on opposite sides. Lid and Enclosure are secured by screw locks

Applications: Used to house DC Chargers, LED Drivers, General Purpose Boards.



CircuitX PEM102
OD:12.8 x 3.6 x 2.5 cm

Surface mount enclosure for simple and easy mounting. Lid and Enclosure are secured by screw locks

Applications: Used to house DC Chargers, LED Drivers, General Purpose Boards.



CircuitX PEM103
OD: 9.7 x 4.7 x 3.9cm

Surface mount enclosure for simple and easy mounting. Lid and Enclosure are secured by screw locks

Applications: Used to house DC Chargers, LED Drivers, General Purpose Boards.



CircuitX PEM104
OD:10 x 4 x 3 cm

Surface mount enclosure for simple and easy mounting. Lid and Enclosure are secured by screw locks

Applications: Used to house DC Chargers, LED Drivers, General Purpose Boards.



CircuitX PEM105
OD: 12 x 3 x 2.3 cm

Generic Enclosure with cutouts for wires and cables. Lid and Enclosure are secured by screw locks

Applications: Used to house DC Chargers, LED Drivers, General Purpose Boards.



CircuitX PEM107
OD:15.2x4x3 cm

Surface mount enclosure with cutout and openings for screw terminal connectors on opposite sides. Lid and Enclosure are secured by screw locks

Applications: Used to house DC Chargers, LED Drivers, General Purpose Boards.



CircuitX PEM108

OD: XX x XX x XX cm

Surface mount enclosure for simple and easy mounting. Lid and Enclosure are secured by screw locks

Applications: Used to house DC Chargers, LED Drivers, General Purpose Boards.



CircuitX PEM200

OD: 21.5 x 10.8 x 8 cm

Large Surface mount enclosure for simple and easy mounting. Lid and Enclosure are secured by screw locks

Applications: Used to house DC Chargers, LED Drivers, General Purpose Boards.



CircuitX PEM300

OD: 11.4x 9.5x 4.9cm

Medium Size Surface mount enclosure for simple and easy mounting. Lid and Enclosure are secured by screw locks. Top Cutouts for On/Off switch and LED Indication

Applications: Used to house DC Chargers, LED Drivers, General Purpose Boards.



CircuitX PEM301

OD: 15.3x 9x 5.4cm

Surface mount enclosure for simple and easy mounting. Lid and Enclosure are secured by screw locks. Top Cutouts for On/Off switch and LED Indication

Applications: Used to house DC
Chargers, LED Drivers, General
Purpose Boards.

GENERAL PURPOSE ENCLOSURE





OD:10 x 10 x 5 cm

Model No: Plastic Enclosure - 4" x 4"

Made from high quality plastic (ABS). Perfect for housing Small sized PCBs & boards.

Applications: Used to house DC Chargers, LED Drivers, General Purpose Boards.



OD: 10 x 17.5 x 4.6 cm

Model No: Plastic Enclosure - 4" x 7"

Made from high quality plastic (ABS). Perfect for housing Small sized PCBs & boards.

Applications: Used to house DC Chargers, LED Drivers, General Purpose Boards.



OD:15 x 15 x 4.5 cm

Model No: Plastic Enclosure - 6" x 6"

Made from high quality plastic (ABS). Perfect for housing Small-sized PCBs & boards.

Applications: Used to house DC Chargers, LED Drivers, General Purpose Boards.



OD: 15 x 20 x 4.6 cm

Model No: Plastic Enclosure - 6" x 8"

Made from high quality plastic (ABS). Perfect for housing Small sized PCBs & boards.

Applications: Used to house DC Chargers, LED Drivers, General Purpose Boards.



OD:20 x 25 x 4.6 cm

Model No: Plastic Enclosure - 8" x 10"

Made from high quality plastic (ABS). Perfect for housing Small sized PCBs & boards.

Applications: Used to house DC Chargers, LED Drivers, General Purpose Boards.



OD: 25 x 30 x 4.5 cm

Model No: Plastic Enclosure -10"x12"

Made from high quality plastic (ABS). Perfect for housing Small sized PCBs & boards.

Applications: Used to house DC Chargers, LED Drivers, General Purpose Boards.



OD: 25 x 10 x 4.7 cm
Model No: Plastic Enclosure - 10"x4"

Made from high quality plastic (ABS). Perfect for housing Small-sized PCBs & boards.

Applications: Used to house DC Chargers, LED Drivers, General Purpose Boards.

OD: XX x XX x XX cm
Model No: Power Adapter Enclosure

Made from high quality plastic (ABS). Perfect for housing Small sized PCBs & boards.

Applications: Used to house DC Chargers, LED Drivers, General Purpose Boards.

OD: 18 x 7.7 x 4.2 cm
Model No: Plastic Soap box type Enclosure

Made from high quality plastic (ABS). Perfect for housing Small sized PCBs & boards.

Applications: Used to house DC Chargers, LED Drivers, General Purpose Boards.

WATER PROOF ENCLOSURE





OD: 10.5 x 10.5 x 8 cm

Model No: WPE01

Made from high quality plastic (ABS). Perfect for housing Small sized PCBs & boards.

Applications: Used to house DC Chargers, LED Drivers, General Purpose Boards.



OD: 10 x 10 x 6 cm

Model No: WPE02

Made from high quality plastic (ABS). Perfect for housing Small sized PCBs & boards.

Applications: Used to house DC Chargers, LED Drivers, General Purpose Boards.



OD: 17.5 x 10 x 8 cm

Model No: WPE03

Made from high quality plastic (ABS). Perfect for housing Small-sized PCBs & boards.

Applications: Used to house DC Chargers, LED Drivers, General Purpose Boards.



OD: 15 x 15 x 7 cm

Model No: WPE04

Made from high quality plastic (ABS). Perfect for housing Small sized PCBs & boards.

Applications: Used to house DC Chargers, LED Drivers, General Purpose Boards.



OD: 19 x 14 x 7 cm

Model No: WPE05

Made from high quality plastic (ABS). Perfect for housing Small sized PCBs & boards.

Applications: Used to house DC Chargers, LED Drivers, General Purpose Boards.



OD: 25 x 16 x 10 cm

Model No: WPE06

Made from high quality plastic (ABS). Perfect for housing Small sized PCBs & boards.

Applications: Used to house DC Chargers, LED Drivers, General Purpose Boards.



OD: 9.5 x 9.5 x 6 cm
Model No: [WPE07](#)

Made from high quality plastic (ABS). Perfect for housing Small-sized PCBs & boards.

Applications: Used to house DC Chargers, LED Drivers, General Purpose Boards.



OD: 25.5 x 25.5 x 10 cm
Model No: [WPE08](#)

Made from high quality plastic (ABS). Perfect for housing Small sized PCBs & boards.

Applications: Used to house DC Chargers, LED Drivers, General Purpose Boards.



OD: 16.5 x 12 x 8 cm
Model No: [WPE09](#)

Made from high quality plastic (ABS). Perfect for housing Small sized PCBs & boards.

Applications: Used to house DC Chargers, LED Drivers, General Purpose Boards.



OD: 30 x 20 x 12.5 cm
Model No: [WPE10](#)

Made from high quality plastic (ABS). Perfect for housing Small sized PCBs & boards.

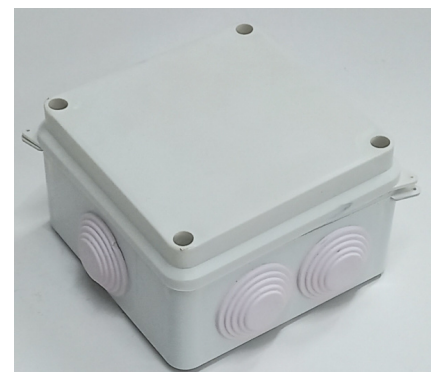
Applications: Used to house DC Chargers, LED Drivers, General Purpose Boards.



OD: 7 x 7 x 5 cm
Model No: [WPE11](#)

Made from high quality plastic (ABS). Perfect for housing Small-sized PCBs & boards.

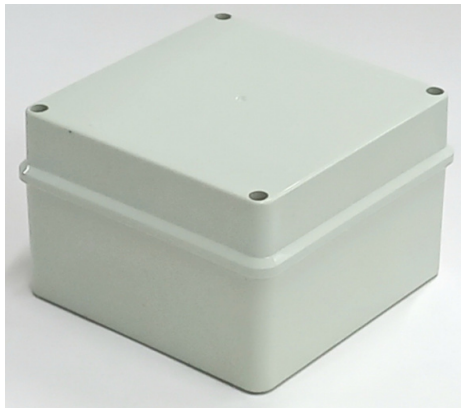
Applications: Used to house DC Chargers, LED Drivers, General Purpose Boards.



OD: 10 x 10 x 7 cm
Model No: [WPE12](#)

Made from high quality plastic (ABS). Perfect for housing Small sized PCBs & boards.

Applications: Used to house DC Chargers, LED Drivers, General Purpose Boards.

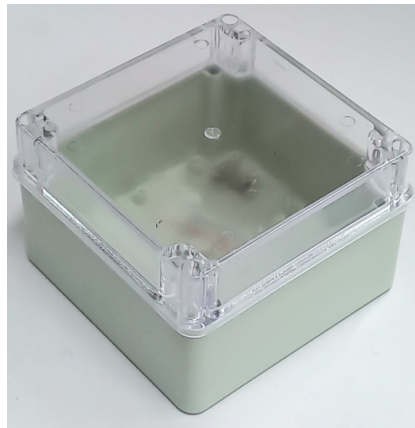


OD: 12.5x 12.5 x 8 cm

Model No: WPE14

Made from high quality plastic (ABS). Perfect for housing Small sized PCBs & boards.

Applications: Used to house DC Chargers, LED Drivers, General Purpose Boards.

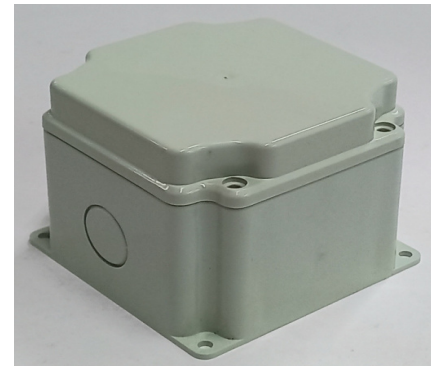


OD: 12.5x 12.5 x 8 cm

Model No: WPE14T

Made from high quality plastic (ABS). Perfect for housing Small sized PCBs & boards.

Applications: Used to house DC Chargers, LED Drivers, General Purpose Boards.



OD: 10.5x 10.5 x 8 cm

Model No: WPE15

Made from high quality plastic (ABS). Perfect for housing Small-sized PCBs & boards.

Applications: Used to house DC Chargers, LED Drivers, General Purpose Boards.



OD: 10.5x 10.5 x 8 cm

Model No: WPE15T

Made from high quality plastic (ABS). Perfect for housing Small-sized PCBs & boards.

Applications: Used to house DC Chargers, LED Drivers, General Purpose Boards.



OD: 17.5x 10 x 6 cm

Model No: WPE16

Made from high quality plastic (ABS). Perfect for housing Small sized PCBs & boards.

Applications: Used to house DC Chargers, LED Drivers, General Purpose Boards.

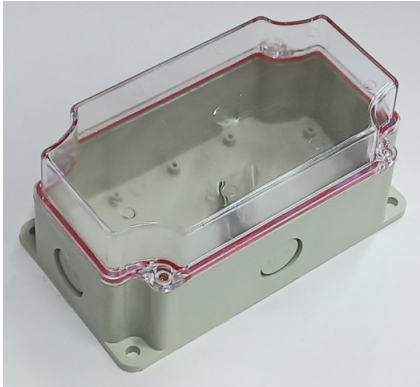


OD: 17.5x 10 x 6 cm

Model No: WPE16T

Made from high quality plastic (ABS). Perfect for housing Small sized PCBs & boards.

Applications: Used to house DC Chargers, LED Drivers, General Purpose Boards.



OD: 17.5x 10 x 8 cm

Model No: WPE17T

Made from high quality plastic (ABS). Perfect for housing Small-sized PCBs & boards.

Applications: Used to house DC Chargers, LED Drivers, General Purpose Boards.

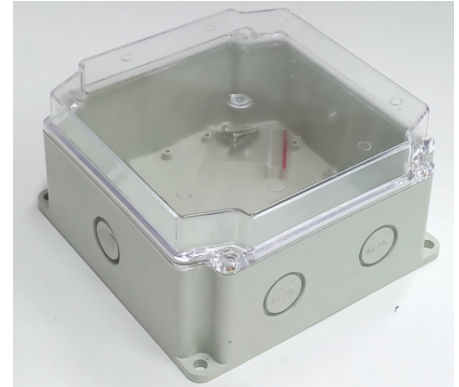


OD: 16x 16x 8.5 cm

Model No: WPE18

Made from high quality plastic (ABS). Perfect for housing Small-sized PCBs & boards.

Applications: Used to house DC Chargers, LED Drivers, General Purpose Boards.

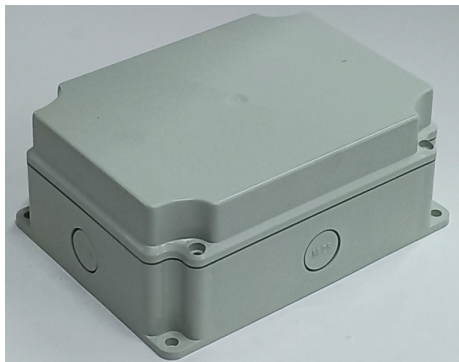


OD: 16x 16x 8.5 cm

Model No: WPE18T

Made from high quality plastic (ABS). Perfect for housing Small-sized PCBs & boards.

Applications: Used to house DC Chargers, LED Drivers, General Purpose Boards.

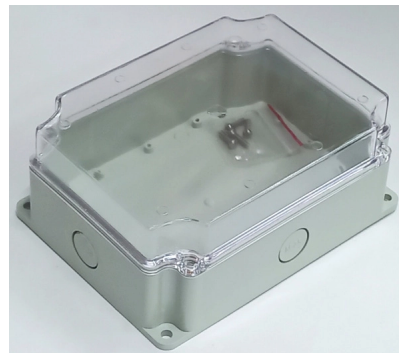


OD: 20x 15x 8 cm

Model No: WPE19

Made from high quality plastic (ABS). Perfect for housing Small sized PCBs & boards.

Applications: Used to house DC Chargers, LED Drivers, General Purpose Boards.

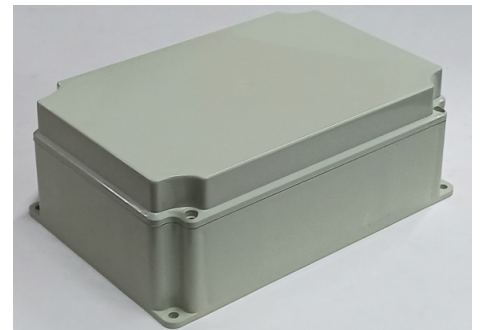


OD: 20x 15x 8 cm

Model No: WPE19T

Made from high quality plastic (ABS). Perfect for housing Small sized PCBs & boards.

Applications: Used to house DC Chargers, LED Drivers, General Purpose Board

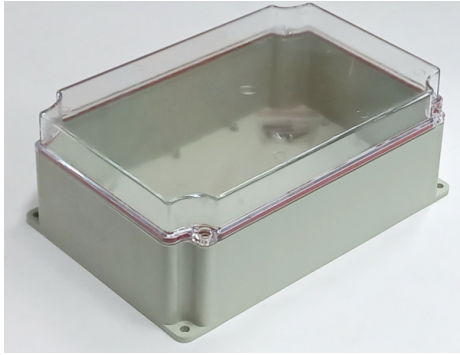


OD: 27x 18x 10 cm

Model No: WPE20

Made from high quality plastic (ABS). Perfect for housing Small-sized PCBs & boards.

Applications: Used to house DC Chargers, LED Drivers, General Purpose Boards.



OD: 27x 18x 10 cm

Model No: [WPE20T](#)

Made from high quality plastic (ABS). Perfect for housing Small-sized PCBs & boards.

Applications: Used to house DC Chargers, LED Drivers, General Purpose Boards.

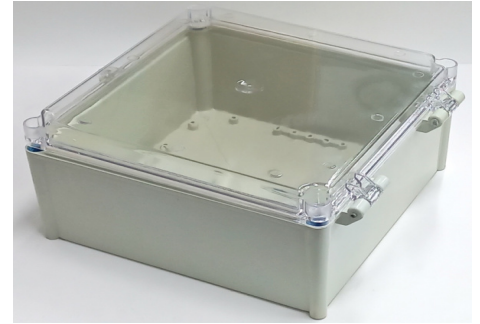


OD: 30x 30x 15 cm

Model No: [WPE21](#)

Made from high quality plastic (ABS). Perfect for housing Small sized PCBs & boards.

Applications: Used to house DC Chargers, LED Drivers, General Purpose Boards.



OD: 30x 30x 15 cm

Model No: [WPE21T](#)

Made from high quality plastic (ABS). Perfect for housing Small sized PCBs & boards.

Applications: Used to house DC Chargers, LED Drivers, General Purpose Boards





OD: 10.9 x 8.4 x 3.7 cm

Model No: [WPE32](#)

Made from high quality plastic (ABS). Perfect for housing Small-sized PCBs & boards.

Applications: Used to house DC Chargers, LED Drivers, General Purpose Boards.

ACCESSORIES

PRODUCTS	PHOTOS	APPLICATIONS
Cable Galnds		
Terminal Block Connectors		
SMPS Power Supplies		
Axial Fans	