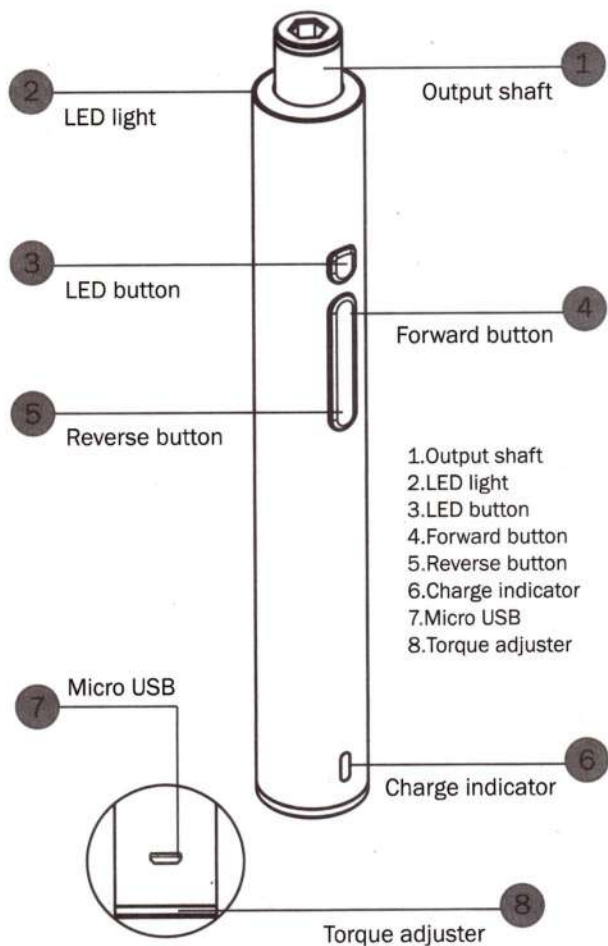


USER'S MANUAL



Mini Electric Screwdriver

Thank you for using our company electric screwdriver. To let you experience the product swimmingly, please read the manual carefully. In case of any printing or translation error, we apologize for the inconvenience.

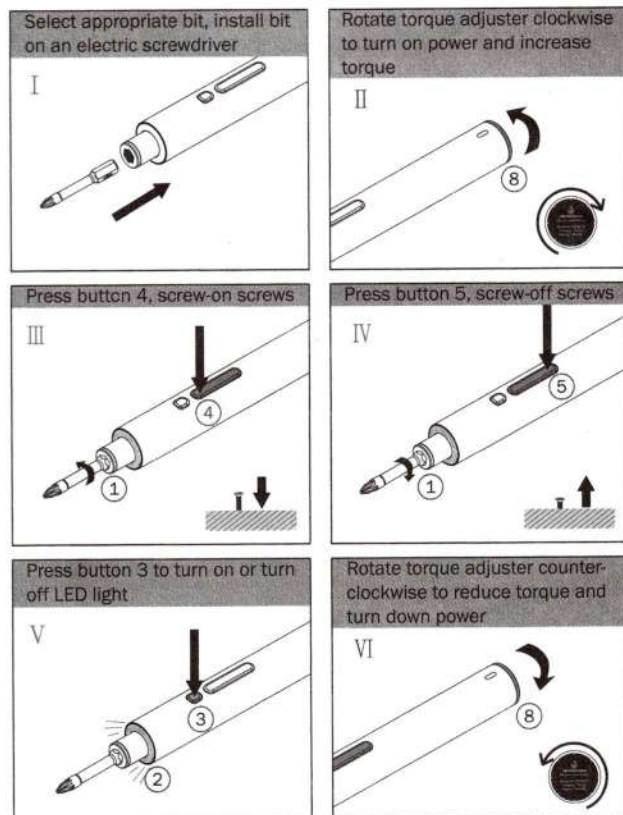
Product information

Product mode:CS1901A Battery voltage:3.7V-DC
 Battery type:L-ion battery Battery capacity:2A
 Weight:720g Speed:150-230rpm
 Manual torque:5N.m Charging time:2hour
 Electric free adjustable torque:0.5-2N.m

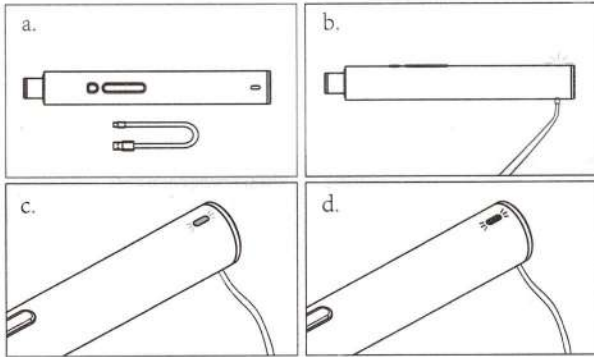
Product list

- Mini electric screwdriver×1 ■ Tool box×1
- USB line×1 ■ Magnetizer×1 ■ Manual×1
- Bits×32 (1/4"): H2, H2.5, H3, H4, H5, H6, P0, P1, P2, P3, T8, T10, T15, T20, T25, T27, U4, U6, U8, U10, Y1, Y2, Y3, Y4, PH0, PH1, PH2, PH3, SL3, SL4, SL5, SL6

Guidelines for use



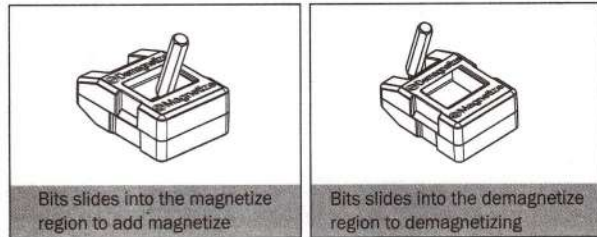
Charging mode



- a. Prepare USB line and screwdriver to be recharged
- b. Connect the USB line to the power supply
- c. White light on, the screwdriver is charging
- d. Blue light on, the screwdriver battery is full

Note: Please use the 5V/2A adapter (mobile phone charger) for recharge, you can also use a mobile power supply or computer connection for charging.

Magnetize or Demagnetize



Attention

1. Please stop using this product if the product accidentally falls into water or splashes into the machine, so as not to cause a short circuit;
2. Please do not dismantle the product without authorization;
3. Please operate according to the instructions;
4. Please charge the electric screwdriver once a month to maintain performance.

Service

1. The warranty period for this product is 6 months.
2. With 7 days from the date of sale, if product performance fault is found, it can be returned, replaced or maintained, please contact the customer service.
3. If you have any questions, please contact your dealer.

The following three cases are not within the scope of warranty:

1. Product is damaged due to improper use, maintenance, and storage;
2. No after-sales vouchers and affective invoices;

Maintenance information

Full name :

Telephone :

E-mail :

Address :

Purchase date :

Maintenance reason :

Manufacturer information

Manufacturer: Suzhou CreationSpace Intelligent Technology Co., Ltd.
Address: 2nd Floor of No.2 Workshop, No.50 Weiting Tonghe Road, Suzhou Industrial Park, China
Telephone: 0086-0512-65690938
E-mail: creationspace@aliyun.com